

SECTION 10, T.6N., R.1E., S.L.B. & M.  
 IN WEBER COUNTY  
 SCALE 1" = 400'

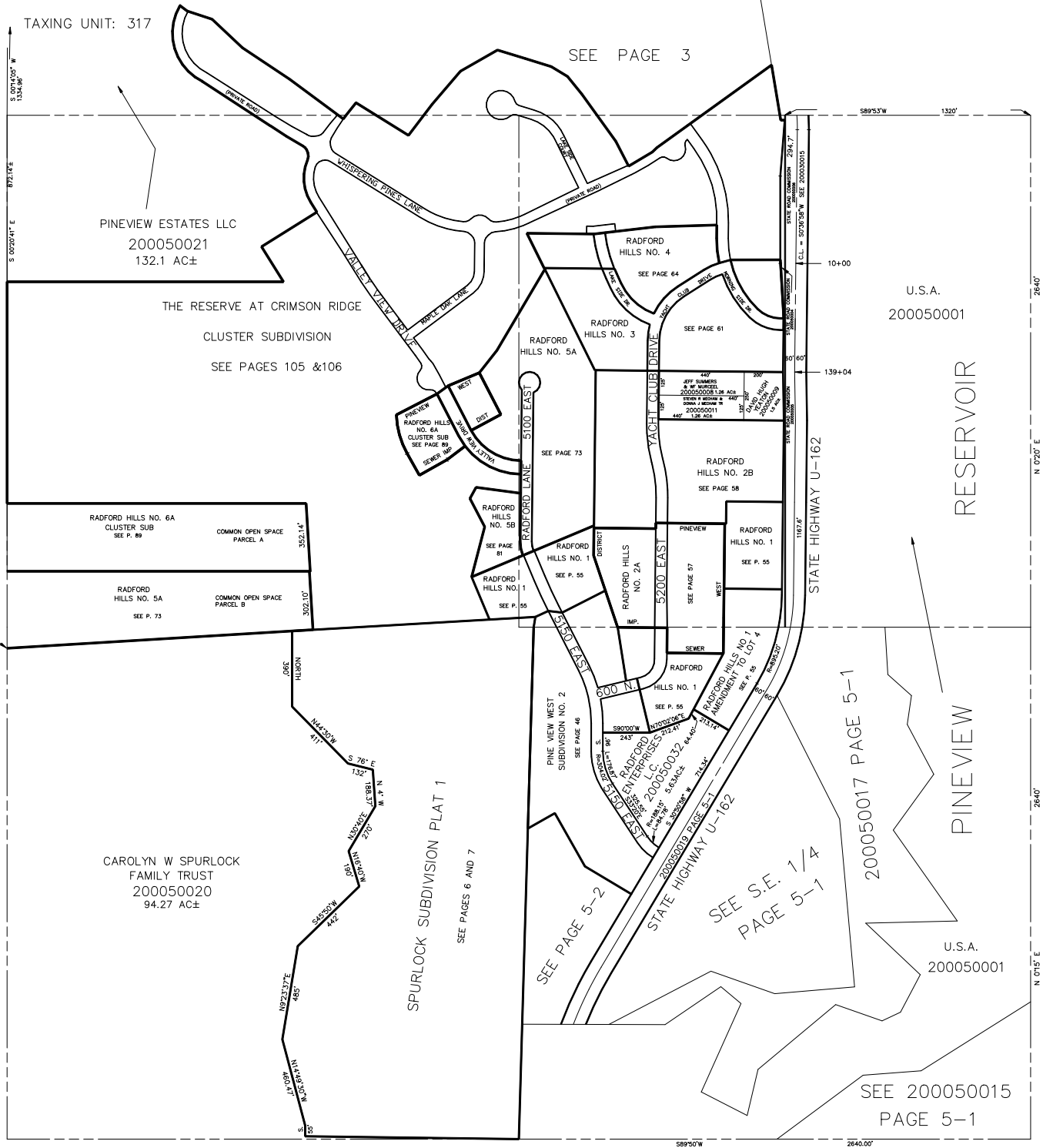
TAXING UNIT: 317

SEE PAGE 4

SEE PAGE 3

SEE PAGE 16

SEE PAGE 8



SEE PAGE 5-1

SEE S.E. 1/4  
 PAGE 5-1

SEE 200050015  
 PAGE 5-1

SPURLOCK SUBDIVISION PLAT 1  
 SEE PAGES 6 AND 7

RESERVOIR

U.S.A.  
 200050001

U.S.A.  
 200050001

PINEVIEW ESTATES LLC  
 200050021  
 132.1 AC±

THE RESERVE AT CRIMSON RIDGE  
 CLUSTER SUBDIVISION  
 SEE PAGES 105 & 106

RADFORD HILLS NO. 6A  
 CLUSTER SUB  
 SEE P. 89

RADFORD HILLS NO. 5A  
 CLUSTER SUB  
 SEE P. 73

CAROLYN W SPURLOCK  
 FAMILY TRUST  
 200050020  
 94.27 AC±

RADFORD HILLS NO. 4  
 SEE PAGE 64

RADFORD HILLS NO. 3  
 SEE PAGE 61

RADFORD HILLS NO. 5A  
 SEE PAGE 73

RADFORD HILLS NO. 5B  
 SEE PAGE 81

RADFORD HILLS NO. 1  
 SEE P. 55

RADFORD HILLS NO. 1  
 SEE P. 55

RADFORD HILLS NO. 1  
 SEE P. 55

RADFORD HILLS NO. 1  
 SEE P. 55

RADFORD HILLS NO. 1  
 SEE P. 55

RADFORD HILLS NO. 1  
 SEE P. 55

RADFORD HILLS NO. 1  
 SEE P. 55

RADFORD HILLS NO. 1  
 SEE P. 55

RADFORD HILLS NO. 1  
 SEE P. 55

RADFORD HILLS NO. 1  
 SEE P. 55

RADFORD HILLS NO. 1  
 SEE P. 55

RADFORD HILLS NO. 1  
 SEE P. 55

RADFORD HILLS NO. 2B  
 SEE PAGE 58

RADFORD HILLS NO. 1  
 SEE P. 55

RADFORD HILLS NO. 1  
 SEE P. 55

RADFORD HILLS NO. 1  
 SEE P. 55